



Agricultural University of Iceland is open for applications for three positions of Assistant Professors in the Faculty of Agricultural Sciences. The Faculty conducts research, innovation and teaching in the fields of applied agricultural and environmental sciences.

## ASSISTANT PROFESSOR IN AGRICULTURAL SCIENCES

### MAIN TASKS AND RESPONSIBILITY

- Construct internationally acknowledged research in the fields of livestock nutrition, feed processing or feed- and forage harvesting technology
- Publish peer-reviewed scientific papers, raise research grants and actively participate in international and national collaborations
- Teach and develop courses at undergraduate and post-graduate level
- Supervise students in research projects
- Participate in the enhancement of research and development activities within the University

### EDUCATION AND COMPETENCY REQUIREMENTS

- PhD in agricultural sciences, engineering, biology, environmental sciences, or related sciences
- Knowledge and experience of research in the field of forages, feed processing and technology or related fields
- Teaching experience, together with the ability and willingness for diverse knowledge dissemination in the field
- Knowledge and experience in feeding, livestock farming and forage cultivation in Nordic areas is desired
- A clear vision for applied research and development in the field
- Ability to work independently and as a part of a group
- Collaborative skills and social agility

### FURTHER INFORMATION

- Guðmunda Smáradóttir, HR and Quality Manager [gudmunda@lbhi.is](mailto:gudmunda@lbhi.is)
- Þóroddur Sveinsson, Head of the Department of Agricultural Sciences [thorodd@lbhi.is](mailto:thorodd@lbhi.is)

Applicants must enclose with their application a certificate of their academic career and work, a bibliography, a report on scientific work and other work they have done, a cover letter including information on research emphases and ideas for teaching methods/development of knowledge dissemination in the field. Wages are according to collective wage agreements of public employees.

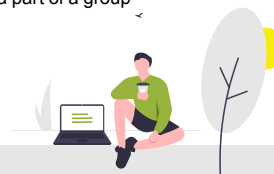
## ASSISTANT PROFESSOR IN CROP SCIENCE

### MAIN TASKS AND RESPONSIBILITY

- Construct internationally acknowledged research in applied crop science and environmental sciences
- Publish peer-reviewed scientific papers, raise research grants, and actively participate in international and national collaborations
- Teach and develop courses at undergraduate and post-graduate level
- Supervise students in research projects
- Participate in the enhancement of research and development activities within the University

### SKILLS REQUIREMENTS

- PhD in crop science or other disciplines in natural sciences that benefits sustainable crop production
- Knowledge and experience of research in the field of crop and environmental sciences or related fields
- Teaching experience, together with the ability and willingness for diverse knowledge dissemination in the field
- A clear vision for applied research and development in the field
- Ability to work independently and as a part of a group
- Collaborative skills and social agility



## ASSISTANT PROFESSOR IN BREEDING

### MAIN TASKS AND RESPONSIBILITY

- Construct internationally acknowledged research in applied genetics and breeding
- Publish peer-reviewed scientific papers, raise research grants, and actively participate in international and national collaborations
- Teach and develop courses at undergraduate and post-graduate level
- Supervise students in research projects
- Participate in the enhancement of research and development activities within the University

### SKILLS REQUIREMENTS

- PhD degree in breeding (quantitative genetics)
- University degree in agricultural sciences
- Knowledge of the cultivation of livestock and agricultural crops in Nordic areas
- Teaching experience, together with the ability and willingness for diverse knowledge dissemination in the field
- A clear vision for applied research and development in the field
- Ability to work independently and as a part of a group
- Collaborative skills and social agility

**APPLICATION DEADLINE:**  
**MARCH 21<sup>ST</sup> 2022**

**LBHI.IS**